

PARK STRIP, FRONT LAWNS, AND LANDSCAPING VISIBLE FROM THE STREET:

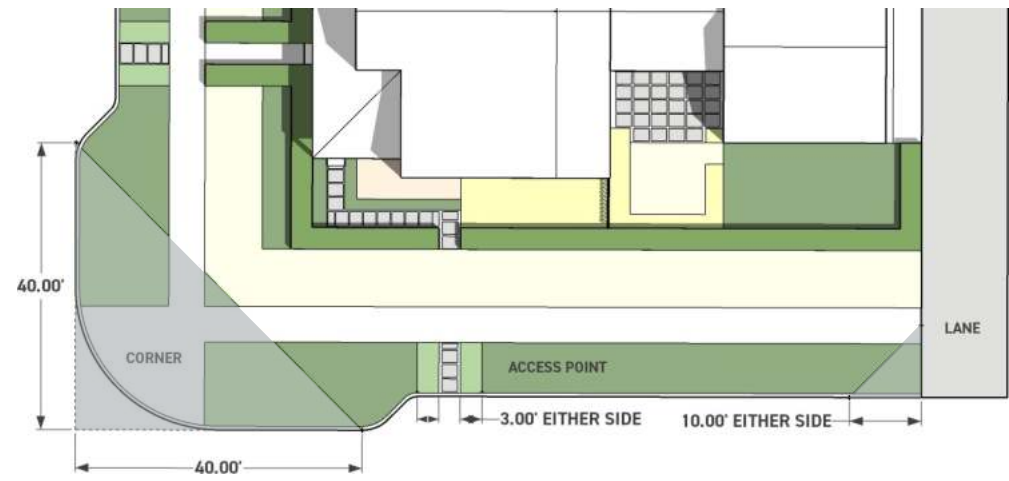
Where lawn or grass is not desired within the parkstrip and or front yard, residents may instead submit a design of densely planted areas with a mixture of shrubs, perennials, and groundcovers to provide year-round interest. The park strip should be designed as an integral component of the landscape style of the lot and utilize complimentary plant species and materials.

Special consideration should be made to provide access through the park strip to building entrances and public sidewalks from the street. Landscape plans are required to show a minimum of 1 access point through the park strip that aligns with the entry walk. For wide lots, upgraded landscape finishes and corner lots a minimum of 2 access points is required. Access paths should not exceed 5-feet in width. Approved path materials are included with each landscape style description.

Street trees are an integral element of all parkstrips. In the event of a drought priority should be given to tree watering.

Key Requirements

- » Street trees integrated into park strip design
- » 100% plant coverage at maturity, not including tree canopy and hardscape
- » Cohesive landscape plan that blends the front and side yard design into the park strip
- » Provide access points from street to building entrances and sidewalk. Materials are dependent on landscape style
- » NO artificial turf or gravel/ small stone ground cover visible from city streets



Sight Triangles

Make sure to maintain safe visibility for pedestrians and cars by concentrating shorter plant material at access points, lanes and on corners. Plant materials should be 18” or less for 3 ft on either side of an access point and within a 10 ft sight triangle on either side of a lane and a 40 ft triangle from a street corner.



Digging

Always notify Blue Stakes by calling at 811 or downloading their app before beginning ANY digging project. When removing turf and soil be aware of possible utility and irrigation lines to avoid damage and costly repairs.



Drip Irrigation

Convert your spray irrigation to drip to conserve water and discourage weeds. Spiraling soaker hoses work well for trees, while drip heads at each understory plant will be more efficient. Trees should be maintained on a separate irrigation zone to allow for individual scheduling and run times. Smart controllers and sensors will provide additional efficiencies.



Weed Control

Use a 3” layer of mulch to help suppress weeds and maintain soil moisture. No small stones or gravel may be used. Weed control during plant maturity is essential and will be strictly enforced by the HOA.

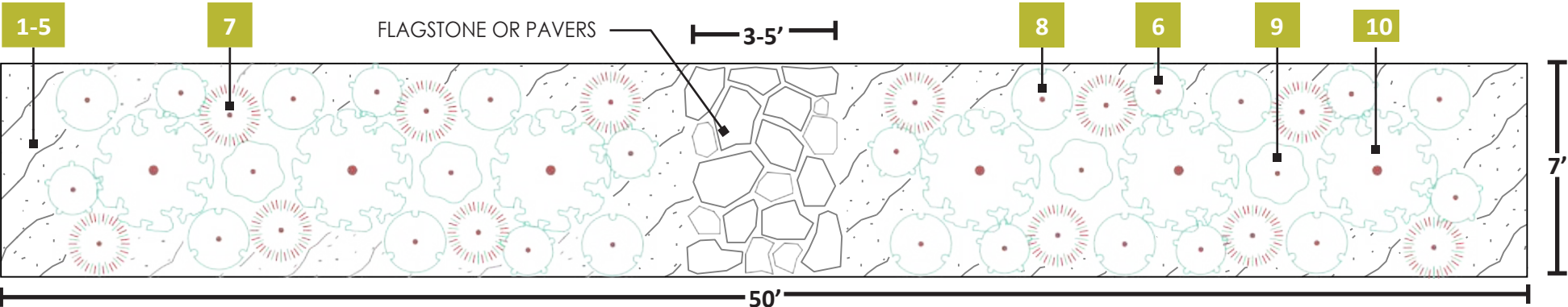




# UTAH COTTAGE GARDEN

**Utah Cottage Garden**  
The Utah Cottage Garden is primarily comprised of perennials and accented with ornamental grasses and shrubs. Groundcovers may be used intermittently in the design. Providing a variety of color and texture is a critical component of this landscape style. Flagstone or pavers should be used to provide access through the park strip.

**COMPATIBLE ARCHITECTURAL STYLES**  
» Hill Farms European Romantic  
» Hill Farms Victorian



PLANT QUANTITIES PER TYPICAL 50 X 7 FT SECTION  
*Adjust plant spacing and quantity to accommodate actual conditions*

ADJUST PLANTING AROUND EXISTING STREET TREES  
*Trees in the park strip should be on a separate irrigation zone from all other plant material.*

| # Botanical Name                | Common Name           | Qty. | Size     |
|---------------------------------|-----------------------|------|----------|
| <b>Groundcover (Choose One)</b> |                       |      |          |
| 1 Ibis taurica                  | Candytuft             | 8    | 1 Gall   |
| 2 Sedum sp. <sup>YR</sup>       | Sedum                 | 9    | 3.5" pot |
| 3 Fragaria                      | Ornamental Strawberry | 9    | 2.5" pot |
| 4 Thymus <sup>YR</sup>          | Thyme                 | 18   | 2.5" pot |
| 5 Potentilla                    | Spring Cinquefoil     | 9    | 2.5" pot |
| <b>Perennials &amp; Grasses</b> |                       |      |          |
| 6 Artemisia cana <sup>YR</sup>  | Silver Sage           | 11   | Quart    |
| 7 Nassella tenuissima           | Mexican Feather Grass | 12   | 1 Gall   |
| 8 Gaura lindheimeri             | Gaura                 | 12   | 1 Gall   |
| 9 Lavandula angustifolia        | English Lavender      | 4    | 1 Gall   |
| <b>Shrubs</b>                   |                       |      |          |
| 10 Buddleia davidii             | Butterfly Bush        | 6    | 1 Gall   |



<sup>YR</sup> - Indicates plants with Year-round Interest



Characteristic Plants

| Botanical Name                           | Common Name           |
|------------------------------------------|-----------------------|
| <b>Groundcover and Lawn Alternatives</b> |                       |
| Ibiris taurica                           | Candytuft             |
| Sedum sp.                                | Sedum                 |
| Fragaria                                 | Ornamental Strawberry |
| Thymus                                   | Thyme                 |
| <b>Perennials</b>                        |                       |
| Alcearosea                               | Hollyhock             |
| Allium                                   | Ornamental Allium     |
| Artemisia cana                           | Silver Sage           |
| Artemisia frigida                        | Fringed Sage          |
| Aster chilensis                          | Pacific Aster         |
| Caryopteris x clandonensis               | Blue Mist Spiraea     |
| Coreopsis sp.                            | Tickseed              |
| Centranthus ruber                        | Jupiter's Beard       |
| Echinacea purpurea                       | Purple Coneflower     |
| Gauralindheimeri                         | Gaura                 |
| Geranium macrorrhizum                    | Cranesbill            |
| Helianthemum 'Ben Ledi'                  | Ben Ledi Sun Rose     |
| Hemerocallis x hybrids                   | Daylily               |
| Heuchera sp.                             | Coral Bells           |
| Iris sp.                                 | Iris                  |
| Kniphofia uvaria                         | Red Hot Poker         |
| Lavandula angustifolia                   | English Lavender      |
| Leucanthemum sp.                         | Shasta Daisy          |
| Monarda didyma                           | Beebalm               |
| Nepeta x faassenii                       | Catmint               |
| Paeonia sp.                              | Peonies               |



Herbs and perennials



Density of plants



Profusion of plants

| Botanical Name                     | Common Name               |
|------------------------------------|---------------------------|
| Sedum sp.                          | Upright Stonecrop         |
| Rudbeckia sp.                      | Black-Eyed Susan          |
| <b>Shrubs</b>                      |                           |
| Buddleia davidii                   | Butterfly Bush            |
| Chaenomeles japonica               | Flowering Quince          |
| Euonymus japonicus                 | Evergreen Euonymus        |
| Philadelphus                       | Sweet Mock Orange         |
| Photinia x fraseri                 | Red Tip Photinia          |
| Potentilla                         | Spring Cinquefoil         |
| Syringa patula 'Miss Kim'          | Dwarf Korean Lilac        |
| Syringa vulgaris                   | Common Lilac              |
| Thuja occidentalis.                | Globe Arborvitae          |
| <b>Vines</b>                       |                           |
| Campsis radicans                   | Trumpet Vine              |
| Clematis ligusticifolia            | Western White Clematis    |
| Lonicera japonica                  | Japanese Honeysuckle      |
| Vitis                              | Grapes                    |
| Wisteria                           | Wisteria                  |
| <b>Trees</b>                       |                           |
| Cladrastis lutea                   | Yellowwood                |
| Prunus virginiana var. melanocarpa | Black Chokecherry         |
| Pyrus calleryana                   | Ornamental Flowering Pear |
| Syringa reticulata 'Ivory Silk'    | Tree Lilac                |
| Tilia tomentosa                    | Sterling Silver Linden    |



Vines

SEASONAL VARIATION



Spring



Summer



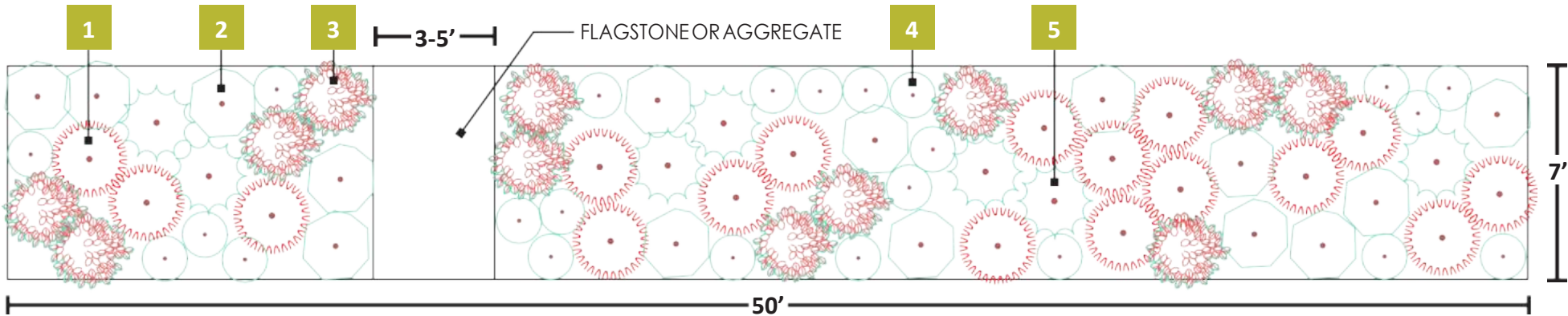
Fall & Winter



# GREAT BASIN PRAIRIE

**Great Basin Prairie**  
The Great Basin Prairies should be predominantly planted with ornamental grasses. Whether planted in large massings or more naturalized, it should relate to the style of planting used in the rest of the landscape design. Access through the park strip can be flagstone or a compacted stone aggregate.

**COMPATIBLE ARCHITECTURAL STYLES**  
» Hill Farms Arts & Crafts  
» Hill Farms Victorian



PLANT QUANTITIES PER TYPICAL 50 X 7 FT SECTION  
*Adjust plant spacing and quantity to accomadate actual conditions*

ADJUST PLANTING AROUND EXISTING STREET TREES  
*Trees in the park strip should be on a separate irrigation zone from all other plant material.*



| # Botanical Name                         | Common Name             | Qty. | Size   |
|------------------------------------------|-------------------------|------|--------|
| <b>Perennials &amp; Grasses</b>          |                         |      |        |
| 1A Schizachyrium scoparium <sup>YR</sup> | Little Bluestem         | 17   | 1 Gall |
| 1B Miscanthus sinensis <sup>YR</sup>     | Maiden Grass            | 17   | 1 Gall |
| 2A Achillea millefolium <sup>YR</sup>    | Common Yarrow           | 15   | 1 Gall |
| 2B Ratibida columnifera                  | Mexican Hat             | 15   | 1 Gall |
| 3A Penstemon sp.                         | Beardtongue (various)   | 23   | 1 Gall |
| 3B Agastache rupestris                   | Licorice or Sunset Mint | 23   | 1 Gall |
| 4A Linum lewisii                         | Wild Blue Flax          | 12   | 1 Gall |
| <b>Shrubs</b>                            |                         |      |        |
| 4B Mahonia repens <sup>YR</sup>          | Creeping Oregon Grape   | 12   | 1 Gall |
| 5A Ephedra viridis <sup>YR</sup>         | Mormon Tea              | 7    | 1 gall |
| 5B Perovskia atriplicifolia              | Russian Sage            | 7    | 1 gall |

Mix & Match - Pick either A or B



<sup>YR</sup>-Indicates plants with Year-round Interest



Characteristic Plants

Botanical Name

Common Name

Groundcover and Lawn Alternatives

Achillea  
Antennaria  
Aristida purpurea  
Bouteloua curtipendula  
Bouteloua gracilis  
Buchloe dactyloides  
Sedum  
Mahonia repens

Yarrow (mown)  
Pussytoes  
Threeawn Grass  
Sideoats Grama  
Blue Grama Grass  
Buffalo Grass  
Sedum  
Creeping Oregon Grape

Ornamental Grasses

Andropogon gerardii  
Calamagrostis  
Miscanthus sinensis  
Panicum virgatum  
Pennisetum  
Schizachyrium scoparium

Big Bluestem  
Karl Foerster Grass  
Maiden Grass  
Switchgrass  
Fountain Grass  
Little Bluestem

Perennials

Achillea  
Agastache cana  
Agastache rupestris  
Aquilegia  
Echinacea purpurea  
Gaillardia pinnatifida  
Gaillardia aristata  
Gaura coccinea  
Helenium sp.  
Ipomopsis aggregata  
Linum lewisii  
Oenothera pallida

Yarrow  
Texas Hummingbird Mint  
Licorice or Sunset Mint  
Columbine  
Purple Coneflower  
Hopi Blanket Flower  
Blanket Flower  
Scarlet Gaura  
Sneezeweed  
Scarlet Gillia  
Wild Blue Flax  
Pale Evening Primrose

Botanical Name

Common Name

Penstemon  
Ratibida columnifera  
Sedum sp.

Beardtongues  
Mexican Hat  
Upright Stonecrop

Shrubs

Amelanchier utahensis  
Artemisia ludoviciana  
Ceanothus martini  
Cercocarpus montanus  
Cotinus coggygria  
Cowania mexicana  
Ephedra viridis  
Forestiera neomexicana  
Perovskia atriplicifolia  
Prunus besseyi  
Rhus glabra  
Rosa woodsii  
Symphoricarpos albus

Utah Serviceberry  
Prairie Sage  
Utah Mountain Lilac  
Mountain Mahogany  
Smoke Bush  
Mexican Cliffrose  
Mormon Tea  
New Mexico Privet  
Russian Sage  
Western Sand Cherry  
Smooth Sumac  
Woods' Rose  
Common Snowberry

Trees

Acer grandidentatum  
Acer negundo  
Cercis occidentalis  
Fraxinus anomala  
Robinia neomexicana

Bigtooth Maple  
Boxelder Maple  
Western Redbud  
Single-Leaf Ash  
New Mexico Locust

Evergreen Trees

Juniperus utahensis  
Pinus thunbergii

Utah Juniper  
Black Pine

SEASONAL VARIATION



Spring



Summer



Fall & Winter



Maiden grass



Russian sage



Smoke Bush



Karl Foerster grass



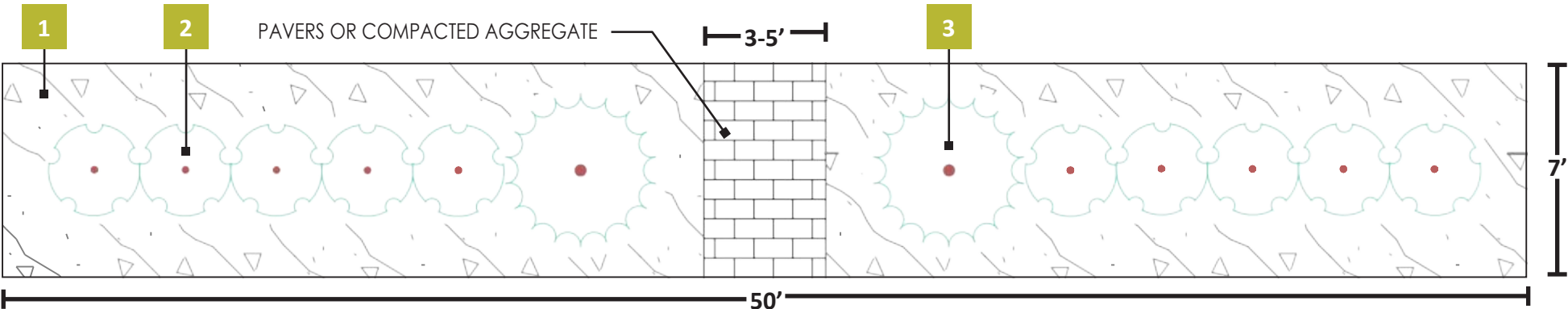
# NEW AMERICAN ESTATE

**New American Estate**  
The New American Estate style should be formal. Planting should occur in large massings. Consider the exact locations for street trees to compliment the architecture of the home. Access points should use pavers or compacted stone aggregate to compliment the formal character of the style. Groundcovers as the dominant plant are acceptable.

- COMPATIBLE ARCHITECTURAL STYLES
- » Hill Farms Colonial Revival

» Hill Farms Victorian

» Hill Farms European Romantic



PLANT QUANTITIES PER TYPICAL 50 X 7 FT SECTION  
*Adjust plant spacing and quantity to accomadate actual conditions*

ADJUST PLANTING AROUND EXISTING STREET TREES  
*Trees in the park strip should be on a separate irrigation zone from all other plant material.*

| # Botanical Name                       | Common Name        | Qty. | Size     |
|----------------------------------------|--------------------|------|----------|
| <b>Groundcover</b>                     |                    |      |          |
| 1A Juniperushorizontalis <sup>YR</sup> | Creeping Juniper   | 16   | 5 Gall   |
| 1B Vinca minor <sup>YR</sup>           | Periwinkle         | 16   | 1 Gall   |
| 1C Thymus sp. <sup>YR</sup>            | Spreading Thyme    | 36   | 2.5" pot |
| <b>Shrubs</b>                          |                    |      |          |
| 2A Euonymusjaponicus <sup>YR</sup>     | Evergreen Euonymus | 10   | 3 gall   |
| 2B Caragana <sup>YR</sup>              | Peashrub           | 10   | 3 gall   |
| 2C Thuja occidentalis <sup>YR</sup>    | Globe Arborvitae   | 10   | 3 gall   |
| 3A Philadelphus lewisii                | Mock Orange        | 2    | 3 gall   |
| 3B Hibiscus syriacus                   | Rose of Sharon     | 2    | 5 gall   |
| 3C Taxus sp. <sup>YR</sup>             | Yew                | 2    | 3 gall   |

Mix & Match - Pick either A,B or C



<sup>YR</sup> - Indicates plants with Year-round Interest



Characteristic Plants

Botanical Name

Common Name

Groundcover and Lawn Alternatives

Achillea  
Ajuga  
Aurinia saxatilis  
Euonymus fortunei  
Cotoneaster procumbens  
Juniperus horizontalis  
Monardella odoratissima  
Origanum vulgare  
Phlox subulata  
Thymus sp.  
Veronica  
Vincaminor

Yarrow (mown)  
Bugleweed  
Basket of Gold  
Winter Creeper  
Creeping Cotoneaster  
Creeping Juniper  
Mint  
Oregano  
Moss Phlox  
Spreading Thyme  
Veronica  
Vincavine/periwinkle

Perennials

Geranium x 'Johnson's Blue'  
Heuchera  
Iberis sempervirens 'Purity'  
Iris sp.  
Santolina

Johnson's Blue Cranesbill  
Coral Bells  
Purity candytuft  
Iris  
Lavender Cotton

Shrubs

Abeliophyllum  
Berberis mentorensis  
Buxus sempervirens  
Caragana  
Daphne sp.  
Deutzia gracilis 'Nikko'  
Euonymus japonicus

White Forsythia  
Barberry  
Boxwood  
Peashrub  
Daphne  
Slender Deutzia  
Evergreen Euonymus

Botanical Name

Common Name

Hibiscus syriacus  
Mahonia aquifolium  
Picea pungens 'Globosa'  
Pinus mugo  
Philadelphus lewisii  
Prunus laurocerasus  
Taxus sp.  
Thuja occidentalis

Rose of Sharon  
Oregon Grape  
Dwarf Blue Spruce  
Mugo Pine  
Mock Orange  
Laurel  
Yew  
Globe Arborvitae

Deciduous Trees

Acer tataricum  
Carpinus betulus 'Fastigiata'  
Gleditsia triacanthos  
Maackia amurensis  
Rhamnus cathartica

Tatarian Maple  
Columnar Hornbeam  
Honeylocust  
Maackia  
Common Buckthorn

Evergreen Trees

Cedrus atlantica fastigiata  
Cedrus atlantica glauca  
Juniperus sp.  
Picea abies 'Nidiformis'  
Thuja occidentalis 'Smaragd'

Columnar Blue Atlas Cedar  
Blue Atlas Cedar  
Juniper  
Nest Norway Spruce  
Emerald Green Arborvitae

Vines

Hedera helix 'Thorndale'  
Parthenocissus quinquefolia

English Ivy  
Virginia Creeper

SEASONAL VARIATION



Summer



Fall



Winter



Sweet Woodruff



Boxwood hedge



Tall hedge Buckthorn



English Ivy

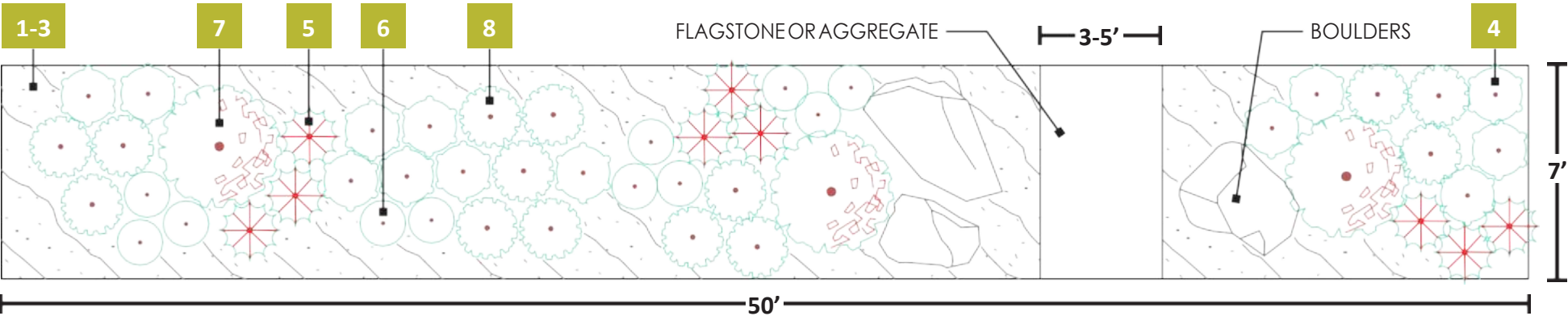
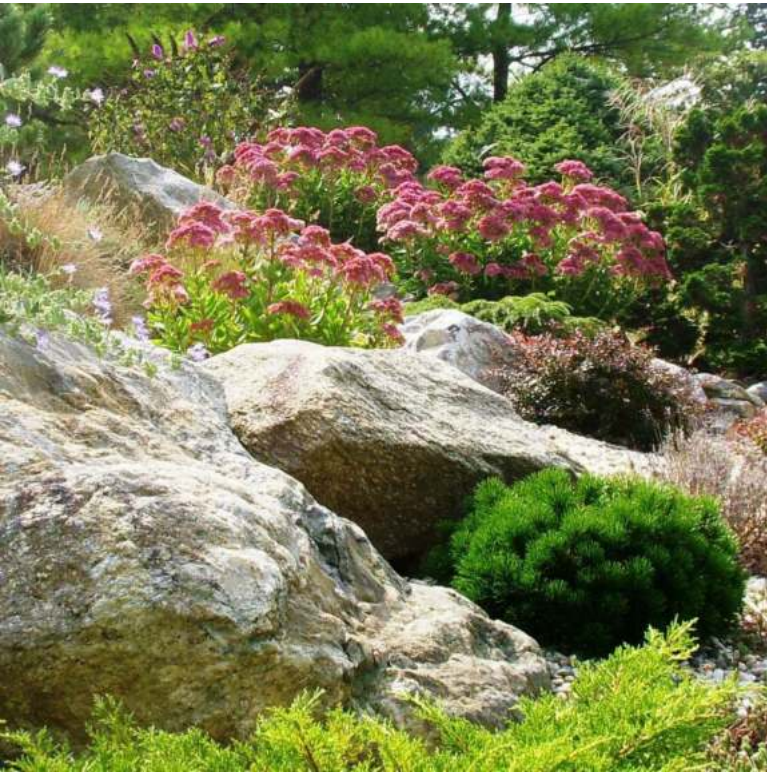


# WASATCH HERITAGE

**Wasatch Heritage**  
Informal massings of plants that are accented by landscape boulders are the primary characteristics of the Wasatch Heritage design. This design should integrate the use of groundcovers and drought tolerant perennials and shrubs. Points of access should be flagstone or a compacted stone aggregate.

- COMPATIBLE ARCHITECTURAL STYLES**
- » Hill Farms Colonial Revival
  - » Hill Farms Victorian
  - » Hill Farms European Romantic

ISSUED: June, 2023



PLANT QUANTITIES PER TYPICAL 50 X 7 FT SECTION  
*Adjust plant spacing and quantity to accomadate actual conditions*

ADJUST PLANTING AROUND EXISTING STREET TREES  
*Trees in the park strip should be on a separate irrigation zone from all other plant material.*

# Botanical Name

Common Name

Qty.

Size

**Groundcover (Choose One)**

- 1 *Arctostaphylos uva-ursi* <sup>YR</sup>
- 2 *Juniperus horizontalis* <sup>YR</sup>
- 3 *Thymus* sp. <sup>YR</sup>

- Kinnikinnick
- Creeping Juniper
- Spreading Thyme

- 12 1 Gall
- 12 5 Gall
- 24 2.5" pot

**Perennials**

- 4 *Artemisia* x 'Powis Castle'
- 5 *Hesperaloe parvifolia*
- 6 *Penstemon* sp.

- Powis Castle Artemisia
- Red Yucca
- Beardtongues (various)

- 13 1 Gall
- 9 1 Gall
- 11 1 Gall

**Shrubs**

- 7 *Cercocarpus montanus* <sup>YR</sup>
- 8 *Lavandula* sp. <sup>YR</sup>

- Mountain Mahogany
- Lavender

- 3 3 gall
- 14 1 gall



- » Boulders are permitted, however, when they are used they must complement the architecture and landscape in size, color and placement.
- » Boulders must be integrated into the existing grade when placed in the landscape. Bury boulders 1/3 into the existing grade.
- » Cluster boulders and accent with planting.

<sup>YR</sup> - Indicates plants with Year-round Interest



Characteristic Plants

Botanical Name

Common Name

Groundcovers and Lawn Alternatives

Arctostaphylos uva-ursi  
Aristida purpurea  
Buchloe dactyloides  
Callirhoe involucrata  
Cerastium tomentosum  
Juniperus horizontalis  
Thymus sp.

Kinnikinnick  
Threedawn Grass  
Buffalo Grass  
Prairie Winecups  
Snow in Summer  
Creeping Juniper  
Thyme

Ornamental Grasses

Andropogon gerardii  
Schizachyrium scoparium  
Bouteloua gracilis  
Deschampsia cespitosa  
Helictotrichon sp.  
Nassella tenuissima

Big Bluestem  
Little Bluestem  
Blue Grama Grass  
Tufted Hairgrass  
Oat Grass  
Mexican Feather Grass

Perennials

Achillea  
Artemisia x 'Powis Castle'  
Echinacea purpurea  
Gaura coccinea  
Gaillardia pinnatifida  
Hesperaloe parvifolia  
Ipomopsis aggregata  
Linum lewisii  
Lupinus  
Nepeta  
Oenothera sp.  
Penstemon sp.  
Phlox sp.

Yarrow  
Powis Castle Artemisia  
Coneflower  
Scarlet Gaura  
Hopi Blanket Flower  
Red Yucca  
Scarlet Gillia  
Western Blue Flax  
Lupine  
Catmint  
Evening Primrose  
Beardtongues  
Phlox



Yarrow



Thyme - Lawn alternative

Botanical Name

Common Name

Ratibida columnifera  
Sphaeralcea sp.  
Yucca sp.

Mexican hat  
Globemallow  
Yucca

Shrubs

Amelanchier utahensis  
Artemisia ludoviciana  
Ceanothus martini  
Cercocarpus montanus  
Chamaebatiaria millefolium  
Cowania mexicana  
Ephedra viridis  
Ericameria nauseosa  
Forestiera neomexicana  
Lavandula sp.  
Mahonia aquifolium  
Perovskia atriplicifolia  
Prunus besseyi  
Rosa woodsii  
Symphoricarpos albus  
Viburnum sp.

Utah Serviceberry  
Prairie Sage  
Utah Mountain Lilac  
Mountain Mahogany  
Fernbush  
Mexican Cliffrose  
Mormon Tea  
Rubberrabbitbrush  
New Mexico Privet  
Lavender  
Oregon Grape  
Russian Sage  
Western Sand Cherry  
Woods' Rose  
Common Snowberry  
Viburnum

Trees

Acer grandidentatum  
Cercis orbiculata  
Fraxinus anomala  
Rhus glabra  
Robinia neomexicana

Bigtooth Maple  
California Redbud  
Single-Leaf Ash  
Smooth Sumac  
New Mexico Locust

Evergreen Trees

Juniperus utahensis

Utah Juniper



Fernbush



Hesperaloe

SEASONAL VARIATION



Spring



Summer



Fall